

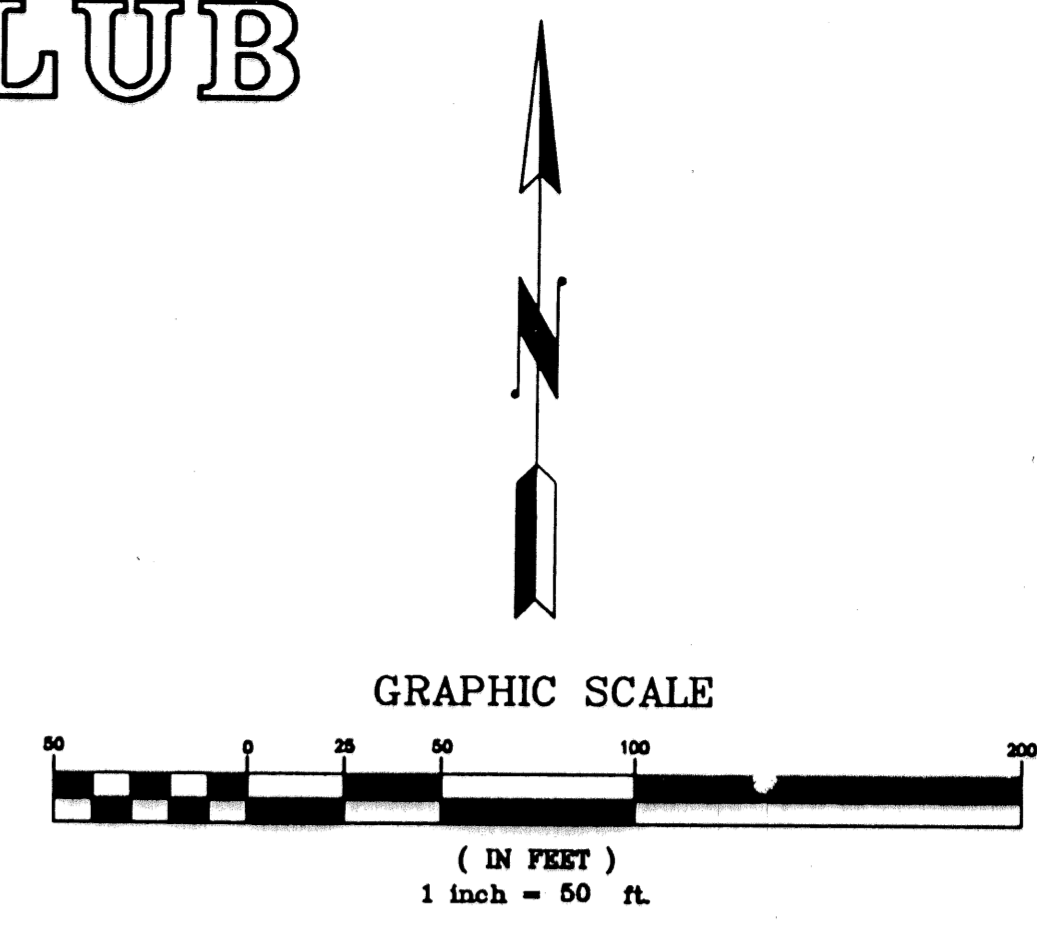
THE ENCLAVE AT WOODFIELD COUNTRY CLUB

IN PART OF SECTION 4, TOWNSHIP 47 SOUTH, RANGE 42 EAST
CITY OF BOCA RATON, PALM BEACH COUNTY, FLORIDA

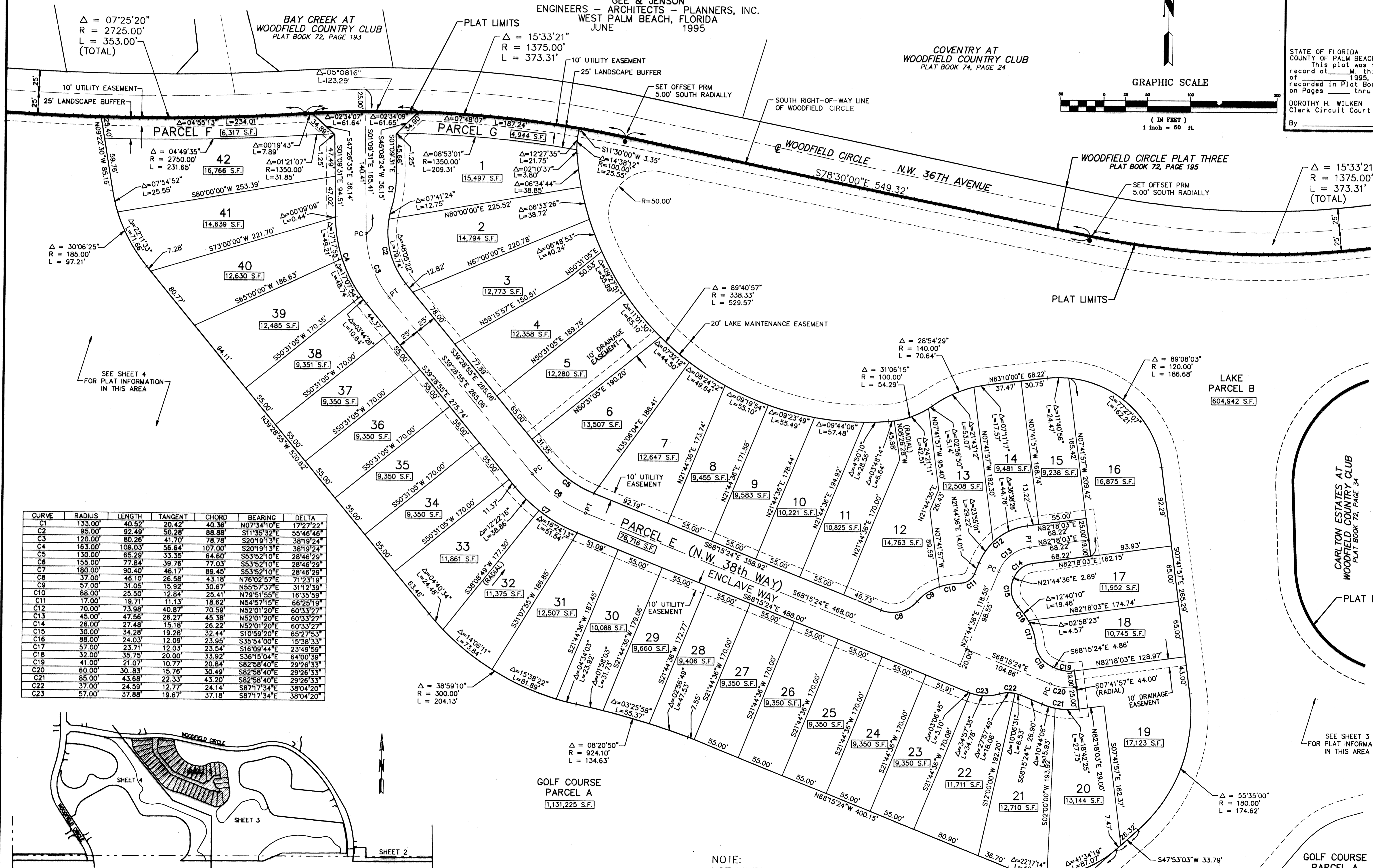
SHEET NO. 5 OF 5

GEE & JENSON
ENGINEERS - ARCHITECTS - PLANNERS, INC.
WEST PALM BEACH, FLORIDA
JUNE 1995

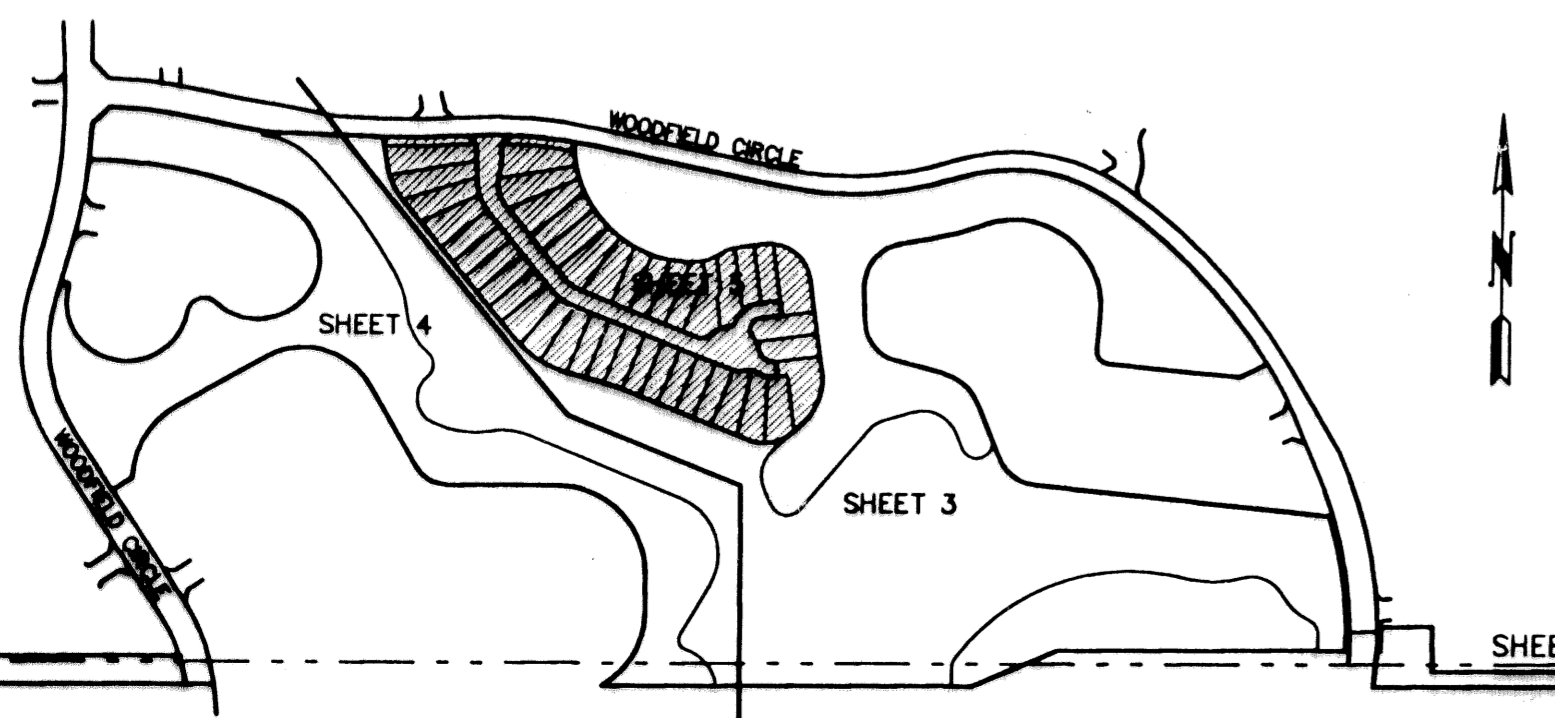
67



STATE OF FLORIDA
COUNTY OF PALM BEACH
This plat was filed for
record at _____ M. this _____ day
of _____ 1995, and duly
recorded in Plat Book No. _____
on Pages _____ thru _____
DOROTHY H. WILKEN
Clerk Circuit Court
By _____ D. C.



CURVE	RADIUS	LENGTH	TANGENT	CHORD	BEARING	DELTA
C1	133.00'	40.52'	20.42'	40.36'	N07°34'10"E	172°7'22"
C2	95.00'	92.49'	50.28'	88.88'	S11°35'32"E	55°48'46"
C3	120.00'	80.26'	41.70'	78.78'	S20°19'13"E	38°19'24"
C4	163.00'	109.03'	56.64'	107.00'	S20°19'13"E	38°19'24"
C5	130.00'	65.29'	33.35'	64.60'	S53°52'10"E	28°46'29"
C6	155.00'	77.84'	39.76'	77.03'	S53°52'10"E	28°46'29"
C7	180.00'	90.40'	46.17'	89.45'	S53°52'10"E	28°46'29"
C8	37.00'	46.10'	26.58'	43.18'	N76°02'57"E	71°23'19"
C9	57.00'	31.05'	15.92'	30.67'	N55°57'37"E	31°12'39"
C10	88.00'	25.50'	12.84'	25.41'	N79°51'55"E	16°35'59"
C11	17.00'	19.71'	11.13'	18.62'	N54°57'15"E	66°25'19"
C12	70.00'	73.98'	40.87'	70.59'	N52°01'20"E	60°33'27"
C13	45.00'	47.56'	26.27'	45.38'	N52°01'20"E	60°33'27"
C14	26.00'	27.48'	15.18'	26.22'	N52°01'20"E	60°33'27"
C15	30.00'	34.28'	19.28'	32.44'	S10°59'20"E	65°27'53"
C16	88.00'	24.03'	12.09'	23.95'	S35°54'00"E	15°38'53"
C17	57.00'	23.71'	12.03'	23.54'	S16°09'44"E	23°49'59"
C18	32.00'	35.75'	20.00'	33.92'	S36°15'04"E	64°00'39"
C19	41.00'	21.07'	10.77'	20.84'	S82°58'40"E	29°26'33"
C20	85.00'	30.83'	15.76'	30.49'	S82°58'40"E	29°26'33"
C21	85.00'	43.68'	22.33'	43.20'	S82°58'40"E	29°26'33"
C22	37.00'	24.59'	12.77'	24.14'	S87°17'34"E	38°04'20"
C23	57.00'	37.88'	19.67'	37.18'	S87°17'34"E	38°04'20"



NOTE:
LOT LINES ARE NOT RADIAL
UNLESS OTHERWISE NOTED.

SUBDIVISION: Woodfield Country Club
BOOK: 74
PAGE: 67
FLOOD MAP: -
ZONING: -
SE: -
ZIP CODE: -
PUD NAME: City of Boca Raton

COMPUTED BY: D. BACHOR
CHECKED BY: -
APPROVED BY: -
DATE: 93-330.6

KEY MAP
SCALE: NONE

GOLF COURSE
PARCEL A
1,131,225 S.F.